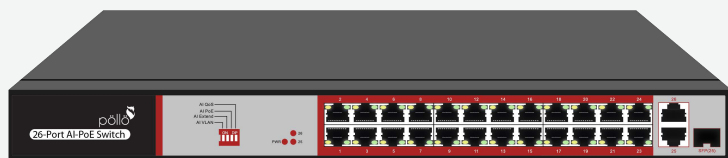




24 port AI POE Switch PLN-1124MGB-SFP



Pollo Pty Ltd.

Address: Suite 401, 55 Phillips St. Parramatta, NSW 2150

Phone: 1300 6600 368

Email: info@pollo.net.au

Website: www.pollo.net.au





24 port AI POE Switch (PLN-1124MGB-SFP)

Fast Ethernet Artificial Intelligence PoE Switch

SFP Port

- PLN-1124MGB-SFP is with one gigabit SFP port (SFP1), use for gigabit SFP module.

Working mode key

- AI Extend:** 1-8 port supports 250M meters long distance power supply (recommended cat 5 or above)
- AI VLAN:** Isolating ports 1-16 from each other, restrain network storms effectively and improve network performance
- AI QOS:** Prioritize the identified video data to make video transmission smoother
- AI PoE:** Automatic detection power of port, power off and restart the device if find



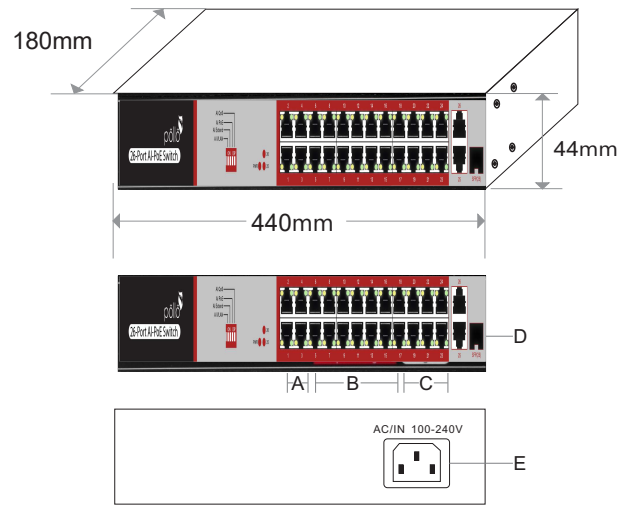
Description

PLN-1124MGB-SFP is AI POE switch, 24 10/100Mbps POE port with 2Gigabit RJ45 port and 1Gigabit SFP port. PLN-1124MGB-SFP can carry power to IP camera, wireless AP, wireless bridge, IP phone. PLN-1124MGB-SFP is with 4 working mode, In AI VLAN mode, 1 -24ports are isolated from each other, which can effectively restrain network storms and improve network performance. In AI Extend mode, the effective transmission distance of 1-8 ports can reach 250meters, which is suitable for remote monitoring and power supply. In the AI power supply mode, the switch automatically detects the working status of the PD device and finds that the device abnormal automatically restarts the device. In AI QOS mode: the video data will be processed preferentially when the device is congested to make the video smoother AI1024 support IEEE802.3af/at ,auto identification power device, so don't worry it will destroy the private standard POE or non-POE device. support fast connecting at 10/100Mbps. It also supports long transmission distance at 250 meters both for power and data, therefore, it saves cost for the project that requiring long distance transmission through extender, fiber and coaxial cable etc. It reduces line losses effectively though 4-core cable supplying power at the same time.

Technical Specification

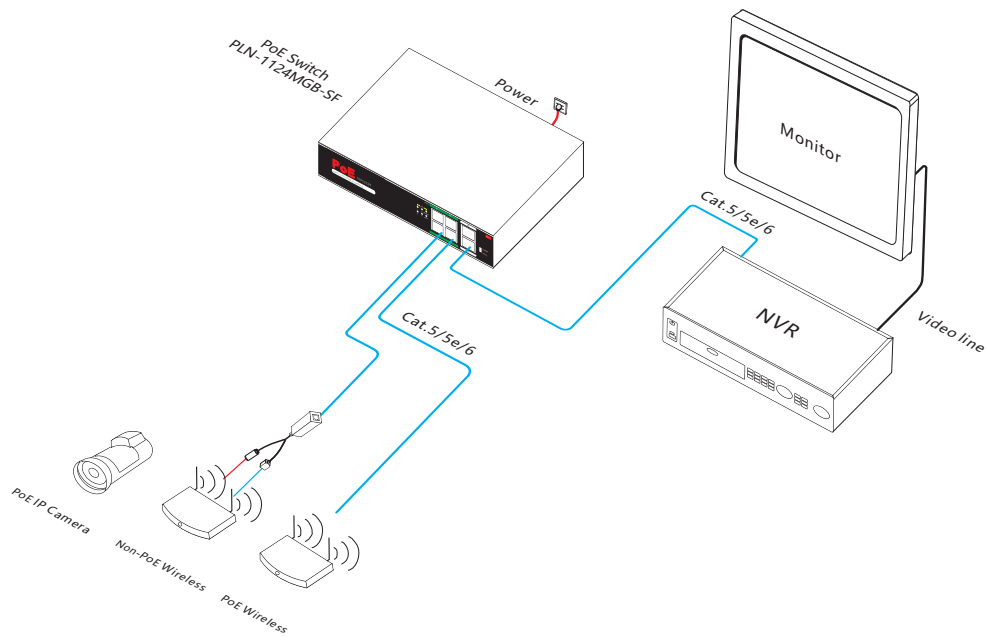
Product Name	24 port AI POE Switch
Product Model	PLN-1124MGB-SFP
Connector	24x 10/100M RJ45 Ports (MDI/MDIX auto sensing) Max PoE power output is 30W. Total : 250W Transmission Distance: 250 Meters @10M, 100 Meters @ 100M
Transfer Mode	Store-And-Forward
Network Medium	Twisted Pair
Performance Specification	Bandwidth: 8.8Gbps Network latency (100 to 100M bps) : maximum 20 μs (using 64 byte packet) Buffer Memory: 4.1Mbit MAC Size: 8K MTBF: 50,000hours
Network Protocols and Standards	IEEE 802.3i IEEE 802.3u IEEE 802.3x IEEE 802.3ab IEEE 802.3af IEEE 802.3at
Switch Mode Definition	AI VLAN AIPoE AI EXTEND AI Qos
LEDs Status	PWR RESV L/A PoE Indicator
Power	Total Power : 250W Single Port : 30W
Dimension	440 * 180 * 44mm
Working Environment	Operating Temperature: 0 ° ~ 40 ° C; Storage Temperature: -40 ° ~ 70 ° C; Humidity: 10% ~ 90%, non condensing Storage Humidity: 5% ~ 90%, non-condensing; Working Altitude: 3000 m (10,000 ft); Storage Altitude: 3,000 m (10,000 ft)
Radiation	CE FCC FCCI Class A
Safety	CE/ROHS/FCC CCCT
Warranty	1 year warranty

Dimensions



- A. Working Indicator B. 24x 100M PoE Ports
- C. 2x100M Uplink Port D. Switch (Standard: 100m ; Extend: 250m)
- E. AC100-240V, 50/60Hz

Application



Ordering Information

Product Model: PLN-1124MGB-SFP

Product Description: 24-Port 10/100M Standard PoE Switch. Port 1-24 support PoE function with port isolation function. IEEE802.3af/at, max PoE power output for each port is 30W. Total power is 250W. Long transmission distance at 250 meters for both power and data. Built-in power supply.

Packing List

Packing List	24 port AI POE Switch
	Power Cable
	Mounting Kits
	User Guide
	Warranty Card