



PLC-TH200-D10

Thermal IP Camera



Pollo Pty Ltd.

Address: Suite 401, 55 Phillips St. Parramatta, NSW 2150

Phone: 1300 6600 368

Email: info@pollo.net.au

Website: www.pollo.net.au



PLC-TH200-D10

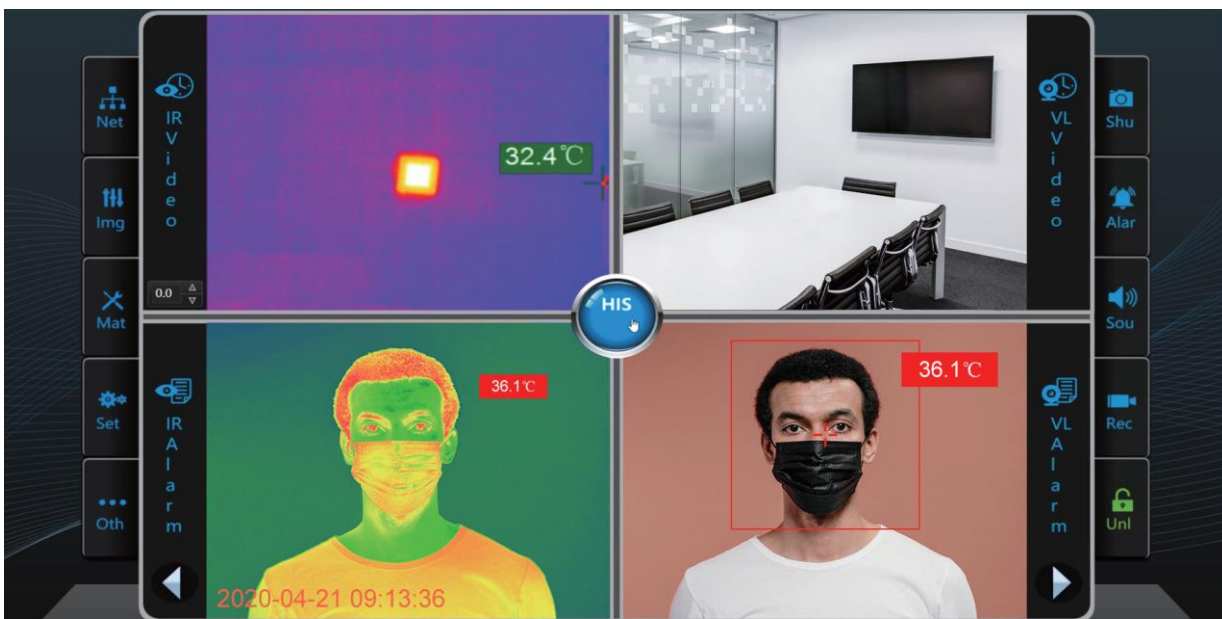
Thermal IP Camera



Thermal IP camera is a new type of IP camera that integrates remote monitoring function, video server function and high-definition camera function. Thermal product is based on infrared radiation imaging technology (thermal imaging technology), combined with infrared heat map and high-definition image processing, accurate temperature measurement and other technologies as the core, which achieve regional personnel identification, accurate personnel temperature detection and pathological body temperature Surveillance helps the reliable implementation of epidemic situation monitoring and response mechanisms in various scenarios.

It can be widely used in public places such as airports, stations, subway stations, schools, hospitals, banks, supermarkets, conference centers, as well as various production centers, centralized o-ce places and other crowded places.

Smart IR Monitoring:



Face detection



Blackbody correction



Video image setting



Voice alarm



Network configuration



Parameter setting

Specifications:

Parameter	Parameter Name	Parameter Value
Infrared	Detector megapixel	384×288
	Pixel size	17_μm
	NETD	_40mK
	Focal length	15mm
	Angle of view	24°×18°
	Frame rate	25Hz
	Infrared pseudo color	There are 8 types of white fever, black fever, hot iron, medical, arctic, dark green, rainbow, and red.
Visible Light	Resolution	200 megapixels
	Focal length	4.7-94mm auto zoom, 20x optical zoom, auto focus, wide dynamic adjustment, backlight compensation, strong light suppression.
	Optical zoom	20
Capability	Range	20 C50 C
	Distance	2-10 Meter
	Accuracy	_ ± 0.3 C (target distance 3-6m, ring temperature 16 ~ 32 C)
	Speed	0.5 Second
	Temperature correction	Built-in shutter, external high-accuracy constant temperature blackbody automatic real-time calibration.
Environment	Operation temperature	5~40C
	Storage environment	-10C~50C, <90%(non-condensing)
	Applicable place	Airports, stations, customs at entry and exit ports, enterprise parks and school gates, port terminals, hospitals, office buildings and other places.
General Parameters	Blackbody target surface uniformity	_0.1C
	Temperature stability	±0.1C/30min
	Input voltage	DC 12V
	Input power	_12W
	Packing Dimension	150mm×100mm×300mm