



# Face Pro

## Face & Fingerprint



### **Pollo Pty Ltd.**

Address: Suite 401, 55 Phillips St. Parramatta, NSW 2150

Phone: 1300 6600 368

Email: [info@pollo.net.au](mailto:info@pollo.net.au)

Website: [www.pollo.net.au](http://www.pollo.net.au)

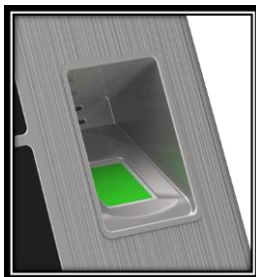


## Face Pro – Face & Fingerprint Time Attendance

### PLF-2000 Pro



Our new model, Face Pro, is popular in the market by the courtesy of its smart design and improved function that supports GPRS, Wi-Fi, PoE, access control, bell, battery and RFID etc. The professional communication port has Wiegand in & out, 2 × relay, NC, NO, alarm, etc. The device comes with 4.3 touch screen that is more human-friendly. Data can be managed via TCP/IP, Wi-Fi, and USB host port for data upload/download to avoid the risk of accidental deletion. Pollo Time comes with perfect setting of shifts, rules, employees and departments, etc.



Fingerprint Sensor for Wet,  
Dry, Rough Fingerprint



4.3 TFT Touch Screen with  
Function Key



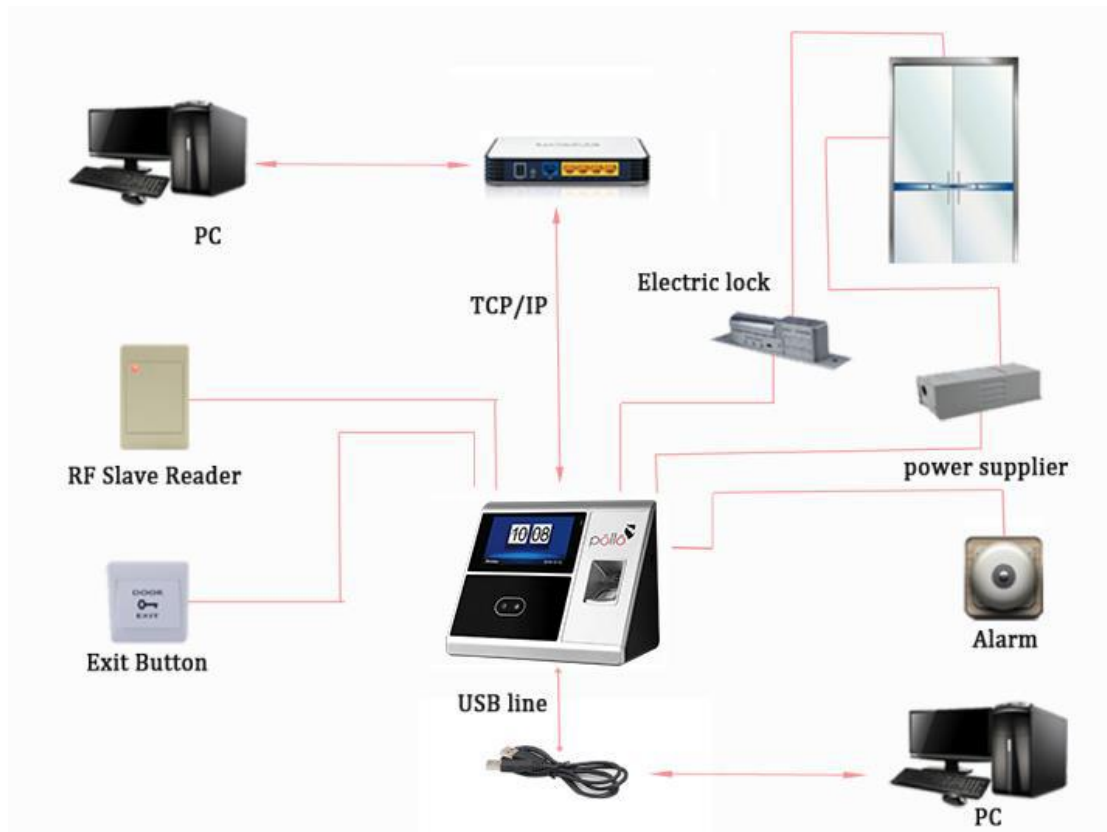
HD Camera

**Specifications:**

<b>Biometric Measurement</b>	Face & Fingerprint
<b>Face Capacity</b>	2000
<b>Fingerprint &amp; RFID Capacity</b>	10,000 each
<b>Log Capacity</b>	200,000
<b>CPU</b>	1 GHz
<b>LCD Display</b>	4.3" Touch Colour Screen 800 x 480 Pixels or 4.3" Colour Screen
<b>Interface</b>	TCP/IP, LAN & WAN(ADMS), USB, 1 × Relay, Wiegand (In & Out)
<b>Language</b>	English, Arabic, French, Korean, Spanish, Portuguese, etc.
<b>Attendance Mode</b>	Face + Fingerprint Face or Fingerprint or Password or Card, Card + Password or Fingerprint + Card + Password
<b>Voice Instruction</b>	16-bit Hi-Fi Voice & Sound Indication
<b>Verification Time</b>	<0.5 s [1: N]
<b>FRR (False Rejection Rate)</b>	<1%
<b>FAR (False Acceptance Rate)</b>	<0.0001%
<b>Power Source</b>	12 V DC/2 A
<b>Operating Temperature</b>	0°C - 45°C
<b>Operating Humidity</b>	<90% RH
<b>Dimensions (mm)</b>	199 x 145 x 90
<b>Weight (kg)</b>	0.65
<b>ADDED FUNCTIONS</b>	
<b>RF Card</b>	12.5 kHz EM/13.56 MHz Mifare
<b>Door Control</b>	Door Control & Alarm
<b>Backup Battery</b>	2 - 4 Hours for Working
<b>Wi-Fi</b>	2.4 GHz (Optional)
<b>GPRS</b>	2G/3G/4G

**Accessories:**


**Application:**



**Interface:**



- |           |               |          |
|-----------|---------------|----------|
| - RS485   | - Alarm       | - TCP/IP |
| - RS232   | - SIM         | - USB    |
| - WG OUT0 | - Door Sensor | - Power  |
| - WE OUT1 | - Exit        |          |
| - SGND    | - NO1         |          |
| - WG IN0  | - COM1        |          |
| - WG IN1  | - NC1         |          |
| - GND     |               |          |